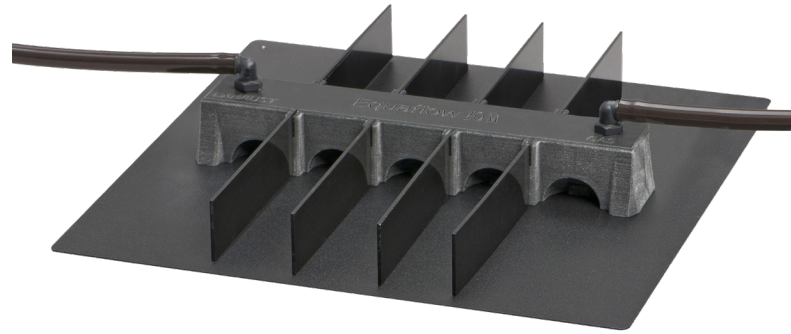


# SOMNI

SCIENTIFIC

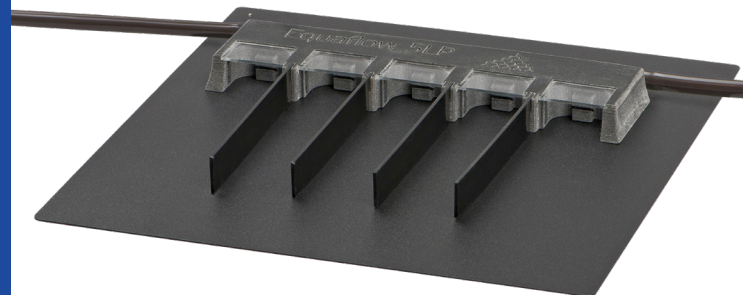
## RODENT ANAESTHESIA MANIFOLDS\*



**EQUAFLOW 10M**



**EQUAFLOW 3I**



**EQUAFLOW 5LP**



### SAFETY:

- Meets NIOSH standards for waste gas safety, when used properly.
- Hyper branched active scavenging to each nose cone assuring compliance and user safety.
- Hyper branched equal gas delivery to each nose cone prevents animal awakening.
- Animals lay in a flat, natural position during anaesthesia (no head torquing).



### FEATURES:

- Optical imaging compatible (from above or below).
- Non-auto fluorescent/luminescent material.
- Effective design allows for lower flow rates and less usage of anaesthetic agent.
- Available in 3 I (125mm FOV), 3XL, 5, 5LP 10 (200mm FOV) and 10XL (250mm FOV) port configurations.
- Integrated magnets assuring consistent manifold and mouse placement on base plate.
- Single port designs for mice and rats.
- Includes Manifold, dividers, magnetic positioners for animals, tubing and black base plate.



☎ (T) 0800 0129101 (D) 01872 248890 (M) 07798 969805

✉ [enquiries@somniscientific.com](mailto:enquiries@somniscientific.com) 🌐 [www.somniscientific.co.uk](http://www.somniscientific.co.uk)